



Kingsland Road, London, E8

BUTLER  STAG



Smart one bedroom ground floor apartment boasting a modern and impressive interior with sleek designs throughout.

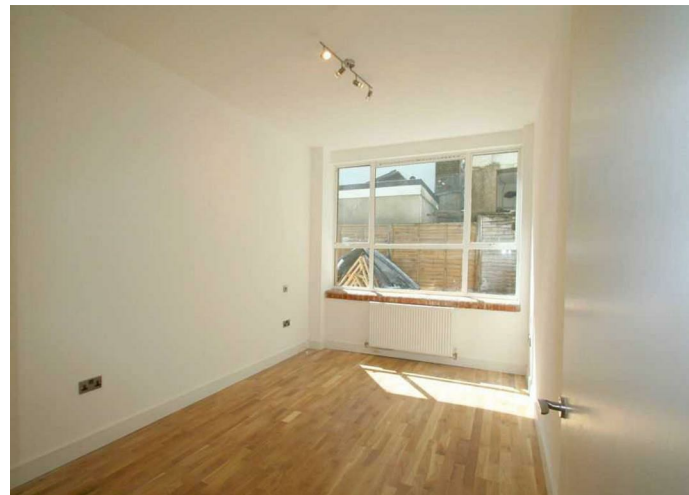


- Recently Refurbished
- Smart Bathroom
- Entrycom System
- Stunning Kitchen
- Available Immediately
- Double Glazed

The accommodation offers a spacious entrance hall, one generous sized bedroom, a high quality newly fitted fully tiled bathroom and a superb open plan kitchen/living room.

The property is well located close to Broadway Market for a selection of cafes, restaurants and market stalls as well as the wide variety of amenities in Stoke Newington and Islington.

Dalston Kingsland Station is within a short walking distance which offers an efficient 20 minute service into central London's Liverpool Street station.





IMPORTANT NOTICE - These particulars have been prepared in good faith and they are not intended to constitute part of an offer or contract. We have not performed a structural survey on this property and the services, appliances and specific fittings have not been tested. All photographs, measurements, floor plans and distances referred to are given as a guide and should not be relied upon.

A large, dark blue silhouette of a stag's head with prominent antlers, facing left, serves as a background for the right side of the page.

BUTLER & STAG

☎ 020 8102 1236

🏠 508 Roman Road, Bow, London, E3 5LU

✉ bow@butlerandstag.com

www.butlerandstag.uk